

AMERICAN SWITCH & SIGNAL

13052 Ratliff Run, Fishers, IN 46037-6266
317-774-5755

Proto48 track components

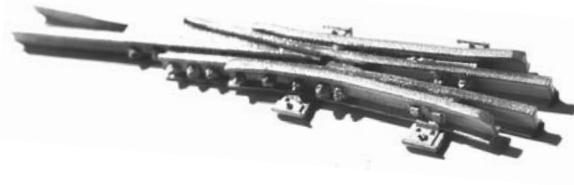
Turnout Kits

Typical turnout kit, frog, guard rails and points



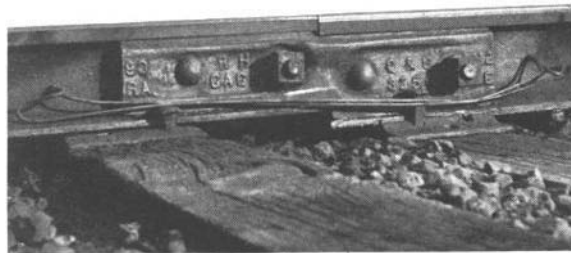
Self Guarded Frog

Picture from 1921 Maintenance of Way Cyclopedia American Switch & Signal version



Compromise joint bars

Picture from 1942 Maintenance of Way Cyclopedia American Switch & Signal version



Q & C Compromise Joint
The Q & C Company



AMERICAN SWITCH & SIGNAL

13052 Ratliff Run, Fishers, IN 46037-6266
317-774-5755

Proto 48 Turnout Kits

Kit 10B-6	#6 bolted rigid frog, 11' points, 8'3" guard rails	Code 100 rail	\$25.00
Kit 10B-7	#7 bolted rigid frog, 16'6" points, 11' guard rails	Code 100 rail	\$25.00
Kit 10B-9	#9 bolted rigid frog, 16'6" points, 11' guard rails	Code 100 rail	\$25.00
Kit 25B-7	#7 bolted rigid frog, 16'6" points, 11' guard rails	Code 125 rail	\$25.00
Kit 25B-8	#8 bolted rigid frog, 16'6" points, 11' guard rails	Code 125 rail	\$25.00
Kit 25B-10	#10 bolted rigid frog, 16'6" points, 11' guard rails	Code 125 rail	\$25.00
Kit 25RB-7	#7 railbound insert frog, 16'6" points, 11' guard rails	Code 125 rail	\$25.00
Kit 25RB-8	#8 railbound insert frog, 16'6" points, 11' guard rails	Code 125 rail	\$25.00
Kit 25RB-10	#10 railbound insert frog, 16'6" points, 11' guard rails	Code 125 rail	\$25.00
Kit 38RB-8	#8 railbound insert frog, 16'6" points, 11' guard rails	Code 138 rail	\$25.00
Kit 38RB-10	#10 railbound insert frog, 16'6" points, 16'6" guard rails	Code 138 rail	\$25.00

Proto 48 Frogs

83B-8½	#8½ bolted rigid frog	Code 83 rail	\$10.00
10B-6	#6 bolted rigid frog	Code 100 rail	\$10.00
10B-7	#7 bolted rigid frog	Code 100 rail	\$10.00
10B-9	#9 bolted rigid frog	Code 100 rail	\$10.00
25B-7	#7 bolted rigid frog	Code 125 rail	\$10.00
25B-8	#8 bolted rigid frog	Code 125 rail	\$10.00
25B-10	#10 bolted rigid frog	Code 125 rail	\$10.00
25RB-7	#7 railbound manganese insert frog	Code 125 rail	\$10.00
25RB-8	#8 railbound manganese insert frog	Code 125 rail	\$10.00
25RB-10	#10 railbound manganese insert frog	Code 125 rail	\$10.00
38RB-8	#8 railbound manganese insert frog	Code 138 rail	\$10.00
38RB-10	#10 railbound manganese insert frog	Code 138 rail	\$10.00
25SG-7	#7 self guarded frog	Code 125 rail	\$12.00

Proto 48 Points

P10-11	11' points with transit clip (no filing of stock rail)	Code 100 rail	\$10.00
P10-16-6	16'6" points with transit clip (no filing of stock rail)	Code 100 rail	\$10.00
P25-16-6	16'6" points with transit clip (no filing of stock rail)	Code 125 rail	\$10.00
P25-16-6	16'6" points with side jaw clip (no filing of stock rail)	Code 125 rail	\$10.00
P38-16-6	16'6" points with transit clip (no filing of stock rail)	Code 138 rail	\$10.00

Proto 48 Guard Rails

GR10-8-3	8'3" guard rails	Code 100 rail	\$10.00
GR10-11	11' guard rails	Code 100 rail	\$10.00
GR25-11	11' guard rails	Code 125 rail	\$10.00
GR38-11	11' guard rails	Code 138 rail	\$10.00
GR38-16-6	16'6" guard rails	Code 138 rail	\$10.00

E-mail jfpautz@comcast.net

AMERICAN SWITCH & SIGNAL

13052 Ratliff Run, Fishers, IN 46037-6266

317-774-5755

Order Form

20 July 2011

QUANTITY	MODEL	DESCRIPTION	PRICE	AMOUNT
_____	_____	_____	\$ _____	\$ _____
_____	_____	_____	\$ _____	\$ _____
_____	_____	_____	\$ _____	\$ _____
_____	_____	_____	\$ _____	\$ _____
_____	_____	_____	\$ _____	\$ _____
_____	CJB 25-10	Compromise joint bar, code 125 rail to code 100 rail, six pair	\$ 12.00	\$ _____
_____	CJB 38-25	Compromise joint bar, code 138 rail to code 125 rail, six pair	\$ 12.00	\$ _____

SUB-TOTAL \$ _____

Shipping via Priority Mail, \$8.00 \$ _____

Prices subject to change without notice
 Make checks payable to **American Switch & Signal**
 Sorry NO CODs or Credit Cards
 PayPal is accepted but add 4% to total

TOTAL \$ _____

Name _____ Phone_(_____)_____

Address _____ E-Mail _____

City, State, Zip _____

E-mail jfpautz@comcast.net