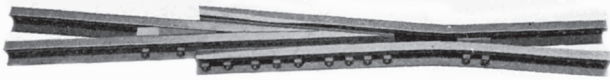


# AMERICAN SWITCH & SIGNAL

1945 N. Hwy 300 West Winamac, IN 46996  
574-946-7667

## Proto 48 Track Components

### Frogs



A. R. E. A. Standard Bolted Rigid Frog.

#### Available Now!

- #6 frog in code 100 (75 # rail)
- #7 frog in code 100 (75 # rail)
- #9 frog in code 100 (75 # rail)
- #7 frog in code 125 (90-100 # rail)
- #8 frog in code 125 (90-100 # rail)
- #10 frog in code 125 (90-100 # rail)

#### Coming soon

- #8 frog in code 100 (75 # rail)
- #10 frog in code 100 (75 # rail)



A. R. E. A. Standard Manganese Steel Rail-Bound Frog.

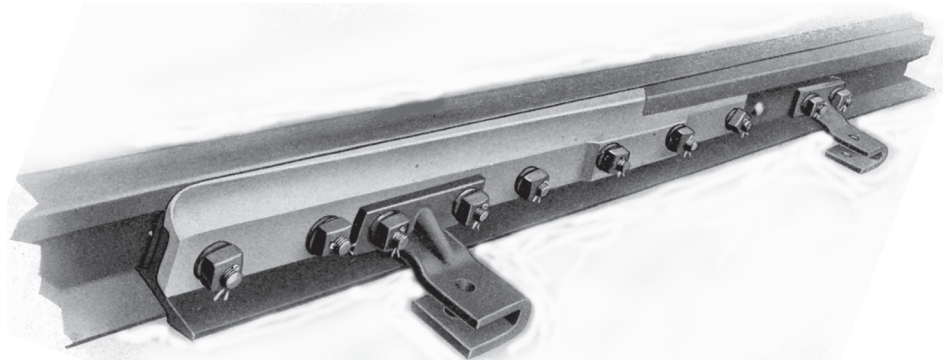
#### Available Now!

- #7 frog in code 125 (90-100 # rail)
- #8 frog in code 125 (90-100 # rail)
- #10 frog in code 125 (90-100 # rail)
- #10 frog in code 138 (112-130 # rail)

#### Coming soon

- #7 frog in code 138 (112-130 # rail)
- #8 frog in code 138 (112-130 # rail)

### Points



A. R. E. A. Switch Points

#### Available Now!

- 11' points in code 100 rail (75 #)
- 16'6" points in code 100 rail (75#)
- 16'6" points in code 125 rail (90-100#)
- 16'6" points in code 138 rail (112-130#)

For more info e-mail [jfpautz@pwrtec.com](mailto:jfpautz@pwrtec.com)

# AMERICAN SWITCH & SIGNAL

1945 N. Hwy 300 West Winamac, IN 46996  
574-946-7667

## Guard Rails

Available Now!

8'-3" guard rails in code 100 rail (75#)

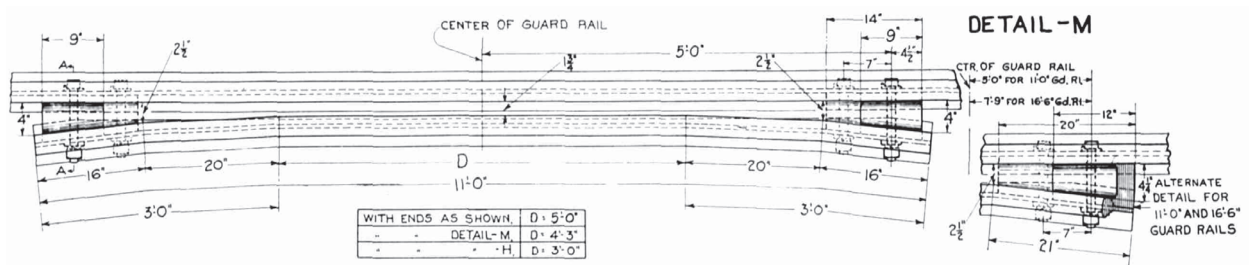
11' guard rails in code 100 rail (75#)

11' guard rails in code 125 rail (90-100#)

16'-6" guard rails in code 138 rail (112-130#)

Coming soon

11' guard rails in code 138 rail (112-130#)



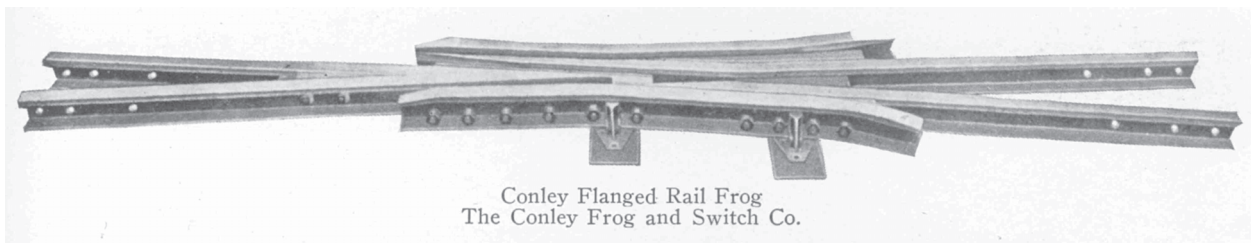
## Self Guarded Frogs

Available Now!

#7 self guarded frog in code 125 rail (90-100#)

Coming soon

#7 self guarded frog in code 100 rail (75#)



Conley Flanged Rail Frog  
The Conley Frog and Switch Co.

# AMERICAN SWITCH & SIGNAL

1945 N. Hwy 300 West Winamac, IN 46996  
574-946-7667

## Order Form

01 April 2008

QUANTITY	MODEL	DESCRIPTION	PRICE	AMOUNT
_____	FB-10-6	Frog, Bolted type, #6, 0.100 rail	\$ 10.00	\$ _____
_____	FB-10-7	Frog, Bolted type, #7, 0.100 rail	\$ 10.00	\$ _____
_____	FB-10-8	Frog, Bolted type, #8, 0.100 rail	\$ 10.00	\$ _____
_____	FB-10-9	Frog, Bolted type, #9, 0.100 rail	\$ 10.00	\$ _____
_____	FB-10-10	Frog, Bolted type, #10, 0.100 rail	\$ 10.00	\$ _____
_____	FB-25-7	Frog, Bolted type, #7, 0.125 rail	\$ 10.00	\$ _____
_____	FB-25-8	Frog, Bolted type, #8, 0.125 rail	\$ 10.00	\$ _____
_____	FB-25-10	Frog, Bolted type, #10, 0.125 rail	\$ 10.00	\$ _____
_____	FRB-25-7	Frog, rail bound type, #7, 0.125 rail	\$ 10.00	\$ _____
_____	FRB-25-8	Frog, rail bound type, #8, 0.125 rail	\$ 10.00	\$ _____
_____	FRB-25-10	Frog, rail bound type, #10, 0.125 rail	\$ 10.00	\$ _____
_____	FRB-38-7	Frog, rail bound type, #7, 0.138 rail	\$ 10.00	\$ _____
_____	FRB-38-8	Frog, rail bound type, #8, 0.138 rail	\$ 10.00	\$ _____
_____	FRB-38-10	Frog, rail bound type, #10, 0.138 rail	\$ 10.00	\$ _____
_____	P10-11	Switch points, w/transit clip, 11', 0.100 rail (no filing stock rail)	\$ 10.00	\$ _____
_____	P10-16-6	Switch points, w/transit clip, 16'6", 0.100 rail (no filing stock rail)	\$ 10.00	\$ _____
_____	P25-16-6	Switch points, w/transit clip, 16'6", 0.125 rail (no filing stock rail)	\$ 10.00	\$ _____
_____	P25-16-6	Switch points, w/side-jaw clip, 16'6", 0.125 rail (no filing stock rail)	\$ 10.00	\$ _____
_____	P38-16-6	Switch points, w/transit clip, 16'6", 0.138 rail (no filing stock rail)	\$ 10.00	\$ _____
_____	GR-10-8	Guard Rails, 8'-3", 0.100 rail	\$ 9.00	\$ _____
_____	GR-10-11	Guard Rails, 11', 0.100 rail	\$ 9.00	\$ _____
_____	GR-25-11	Guard Rails, 11', 0.125 rail	\$ 9.00	\$ _____
_____	GR-38-11	Guard Rails, 11', 0.138 rail	\$ 9.00	\$ _____
_____	GR-38-16-6	Guard Rails, 16'-6", 0.138 rail	\$ 9.00	\$ _____
_____	Kit 10	Complete turnout kit P10, GR10, Frog _____	\$ 25.00	\$ _____
_____	Kit 25	Complete turnout kit P25, GR25, Frog _____	\$ 25.00	\$ _____
_____	Kit 38	Complete turnout kit P38, GR38, Frog _____	\$ 25.00	\$ _____
_____	FSG-10-7	Frog, self guarded, #7, 0.100 rail	\$ 12.00	\$ _____
_____	FSG-25-7	Frog, self guarded, #7, 0.125 rail	\$ 12.00	\$ _____

**NOTE the items that are grey are not yet available**

SUB-TOTAL \$ \_\_\_\_\_

Shipping via Priority Mail, \$8.00 \$ \_\_\_\_\_

Prices subject to change without notice  
Make checks payable to **American Switch & Signal**  
Sorry NO CODs or Credit Cards

**TOTAL** \$ \_\_\_\_\_

Name \_\_\_\_\_ Phone\_(\_\_\_\_\_) \_\_\_\_\_

Address \_\_\_\_\_ E-Mail \_\_\_\_\_

City, State, Zip \_\_\_\_\_